

# Smart Elevator Tech, LLC

## Low-Profile Fishplate™

**A Seismic Fishplate that requires only  
1" clearance behind the guide rail**

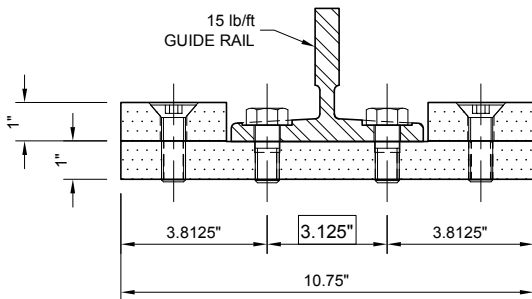
Call (415) 819-5744  
or email

rich@smartelevatortech.com  
for pricing

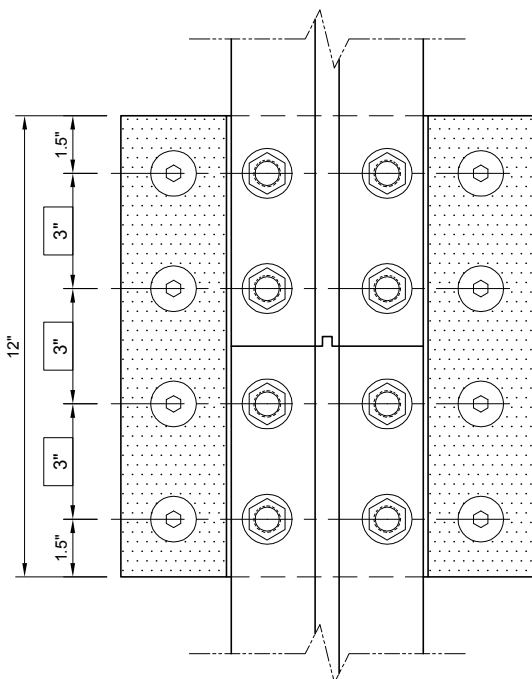
[www.smartelevatortech.com/LPFP.htm](http://www.smartelevatortech.com/LPFP.htm)

**Low-Profile Fishplate™** is a Seismic Risk Zone 2 or Greater guide rail fishplate for 15 lb/ft guide rails engineered to fit tight clearances where traditional T-section or minimum clearance fishplates do not fit.

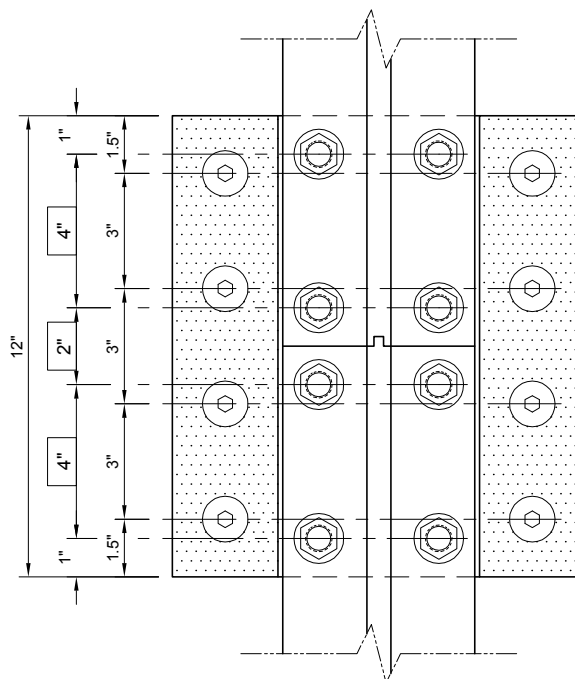
- 1" clearance back of guide rail to wall or beam.
- Fits standard hoistway for seismic and non-seismic installations or narrower hoistways for the same elevator capacities.
- Designed for seismic retrofits with tight clearance to existing walls & beams without removing the rail.
- Meets ASME A17.1 - 1996 through 2008 including sections 2.23.7, 8.4.8.5 & 8.4.8.6. The section modulus and moment of inertia of the assembly is equal to or greater than the guide rail. Models A & B for two common rail end hole dimensions. Other hole spacing available by special order.
- Custom manufactured ASTM A307 Grade A bolts comply with A17.1, section 2.23.2.1(b) & 8.4.8.6(h).
- Two bolt lengths available to accommodate both modern counterbored rails and older non-counterbored rails.
- Certified by a California licensed structural engineer, calculations available upon request.
- Proudly made in the USA.



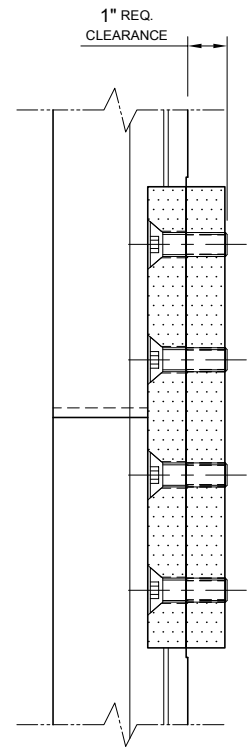
PLAN VIEW - MODEL A & B



FRONT VIEW - MODEL A



FRONT VIEW - MODEL B



SIDE VIEW

1 LOW-PROFILE SEISMIC GUIDE RAIL FISHPLATE  
SCALE: 1:5  
GUIDERAIL: 15# (T127-2/B or OTIS #1)  
SPECIFY: MODEL A or B

NOTE: VERIFY BOXED DIMENSIONS  
TO SELECT MODEL A or B TO SUIT  
YOUR GUIDE RAILS.



































































































