

Retracta Ladder®

Retracta Ladder® a retractable elevator pit ladder engineered to fit tight clearances where traditional, stationary pit ladders do not fit.

- **7" clearance** center of rung to wall when deployed for full OSHA and ASME A17.1-1996 through 2010 compliance. Satisfies 7" rung-to-object rule per A17.1-2004 with standard hoistway width. No need to widen or notch the pit & hoistway for the ladder.
- **3" wall to outside** edge of ladder when retracted for exceptionally tight car to hoistway clearance.
- **Electrical Protective Device** compliant with A17.1-2007/10, 2.26.2.38 to be field wired in series with elevator stop switch or door safety circuit, prevents elevator operation when ladder is deployed. 1NC/1NO snap-action, NEMA 4X (IP67) is standard.
- **Traction Tread™** channel rungs with slip-resistant, self-cleaning, 3-hole pattern perforated buttons for exceptional multi-direction grip and strength (495 lbs. mid-span for a 2-foot rung with a safety factor of 2).
- **Gas spring** (strut) reduces force required to deploy or retract ladder to less than 10 lbf (< 50 lbf code).
- **Pull pin** with secure grip T-handle to deploy/retract ladder and mechanically secure it in both positions.
- **Reversible** installation with provisions to mount micro switch & pull pin assembly on either side.
- **OSHA Safety Yellow** powder coat painted for optimal visual safety and rust protection.
- **Pre-greased** hinge points for lifetime operation.
- **Two or three sections** for reduced shipping costs and ease of handling (field assembly required).
- **16" wide** rung by 3' (RL36), 4' (RL48), 5' (RL60), 6' (RL72) & 7' (RL84) pit depths standard. Trim riser bases for custom depth. Custom widths available.
- Ideal for **new** and **existing** elevators, including **MRL** hoistway overhead machine access.
- Compliant with **California Circular Letter E-10-02**.
- Proudly made in the **USA**.
- **The Retracta Ladder®** is Patent Pending.

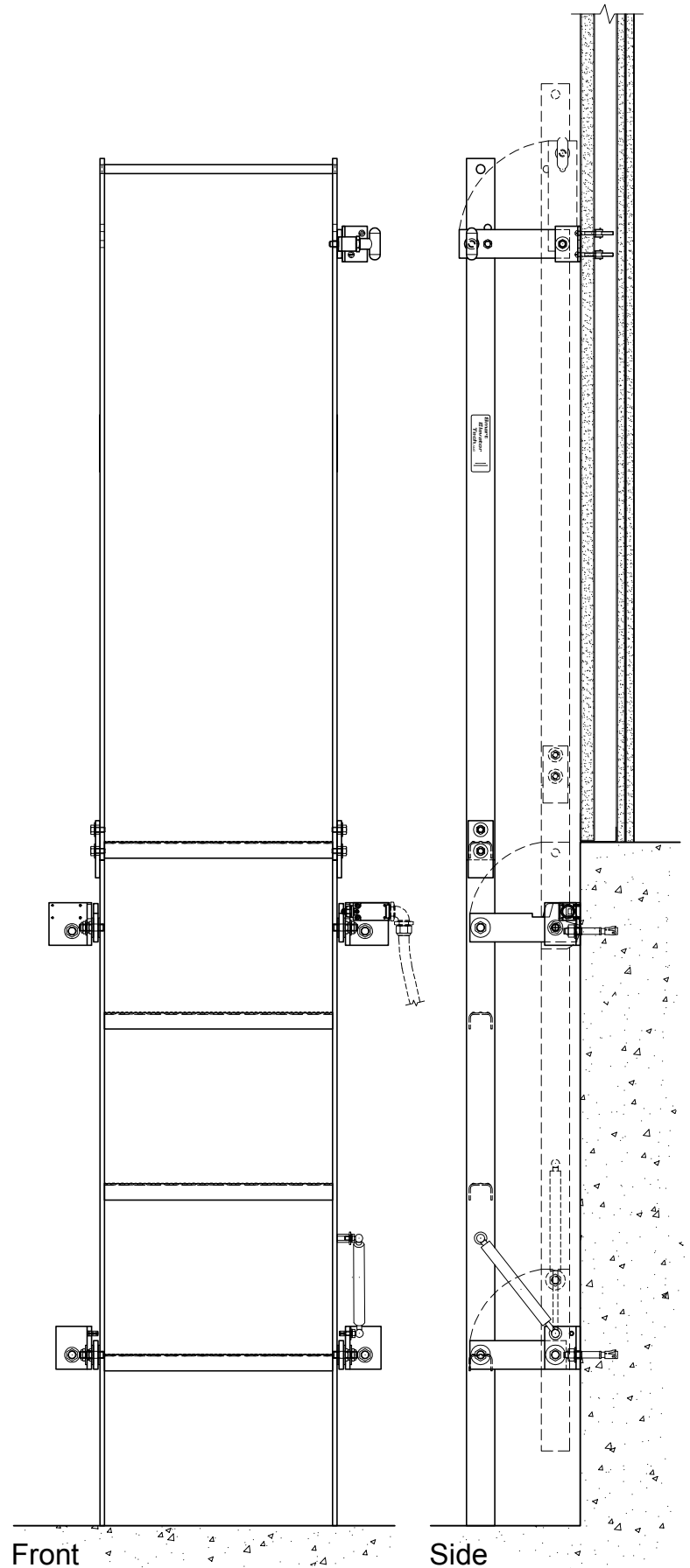
Call (415) 819-5744

or email

rich@smartelevatortech.com

for pricing

www.smartelevatortech.com/RetractaLadder.htm



Front

Side

