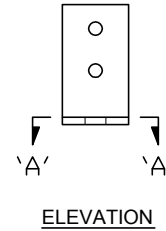


2 INSTALLATION ELEV.
SCALE: 1-1/2"=1'-0"



ELEVATION



SECTION A-A

BKT. DETAIL
QUANTITY: TWO (2)

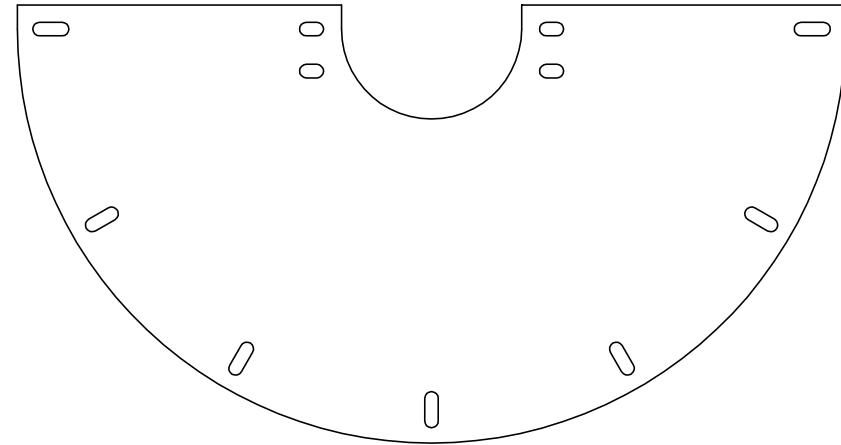


PLATE DETAIL
QUANTITY: ONE (1)

1 SHEAVE ROPE RETAINER - 30"
SCALE: 1-1/2"=1'-0"
MATERIAL: ASTM A36 STEEL

FABRICATION NOTES:

1. PAINT ALL FABRICATED STEEL ITEMS OSHA SAFETY YELLOW AFTER FABRICATION.
2. INCLUDE GRADE 5 PLATED FASTENERS:
 - (4) 1/2" -13 x 1 1/2" LG HEX BOLT
 - (4) 1/2" FLAT WASHER
 - (4) 1/2" LOCK WASHER
 - (4) 1/2" NUT

DRAWN BY: R. BLASKA FIRM: SET, LLC DRAW DATE: 11/02/2010 DIMENSIONS: FEET & INCHES	REV . . .	DESCRIPTION: . . .	DATE: . . .	BY: . . .	PRODUCT: Segmented Rope Retainer FOR H.W. Ø30" 2:1 CAR SHEAVE
Smart Elevator Tech, LLC 2117 Bush St., San Francisco, CA 94115-3103 phone: (415) 819-5744 fax: (415) 354-3454 email: rich@blaska.com web: www.smartelevatortech.com					P/N: RRR30 HOLLISTER-WHITNEY: #331-90
					FABRICATOR: MetalworX, Waterloo, WI
DWG.: SHEAVE ROPE RETAINER					REV -
FILE: SRR-1.dwg CODE: CCR Title 8 & ASME A17.1-2007					DWG.# 1 OF 1