

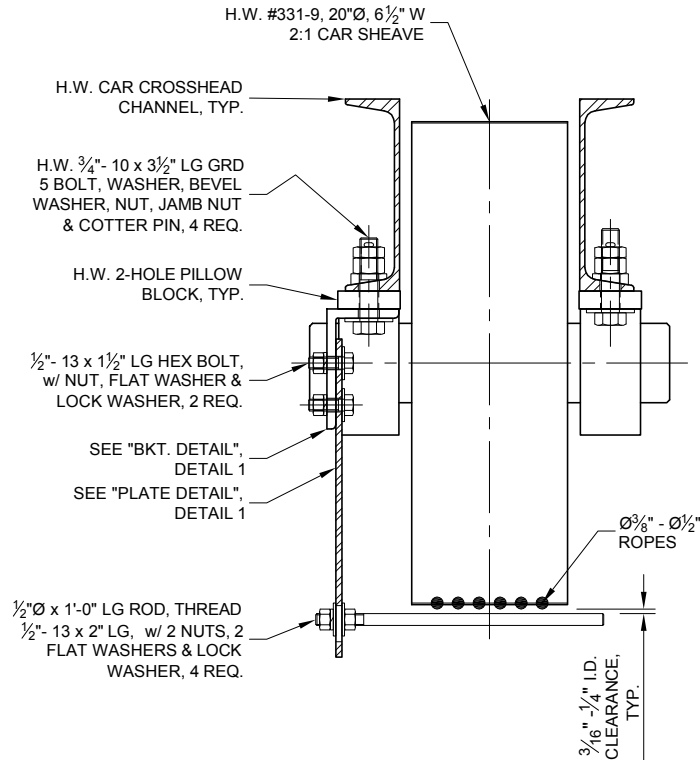
ELEVATION



SECTION A-A

BKT. DETAIL

QUANTITY: ONE (1)



2 INSTALLATION ELEV.
SCALE: 1-1/2"=1'-0"

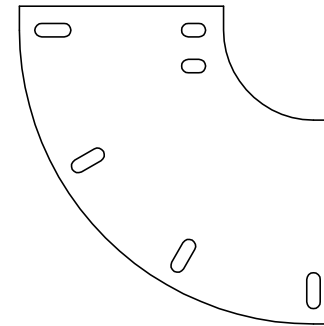


PLATE DETAIL
QUANTITY: ONE (1)

1 SHEAVE ROPE RETAINER - 20"
SCALE: 1-1/2"=1'-0"
MATERIAL: ASTM A36 STEEL

FABRICATION NOTES:

1. PAINT ALL FABRICATED STEEL ITEMS OSHA SAFETY YELLOW AFTER FABRICATION.
2. INCLUDE GRADE 5 PLATED FASTENERS:
 - (2) ½" -13 x 1½" LG HEX BOLT
 - (2) ½" FLAT WASHER
 - (2) ½" LOCK WASHER
 - (2) ½" NUT

DRAWN BY: R. BLASKA	REV	DESCRIPTION:	DATE:	BY:	PRODUCT: Segmented Rope Retainer
FIRM: SET, LLC	FOR H.W. Ø20" 2:1 CAR SHEAVE - HALF
DRAW DATE: 11/02/2010	P/N: RRRH20
DIMENSIONS: FEET & INCHES	HOLLISTER-WHITNEY: #331-9
Smart Elevator Tech, LLC 2117 Bush St., San Francisco, CA 94115-3103 phone: (415) 819-5744 fax: (415) 354-3454 email: rich@blaska.com web: www.smartelevatortech.com					FABRICATOR: MetalworX, Waterloo, WI
					DWG.: SHEAVE ROPE RETAINER
FILE: SRR-1.dwg	CODE: CCR Title 8 & ASME A17.1-2007	-	OF	1	