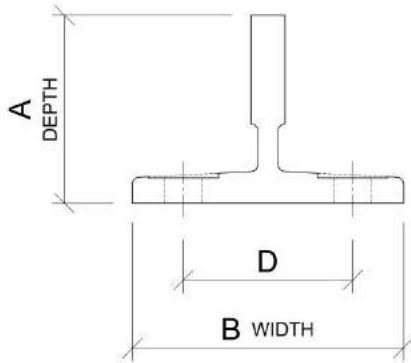
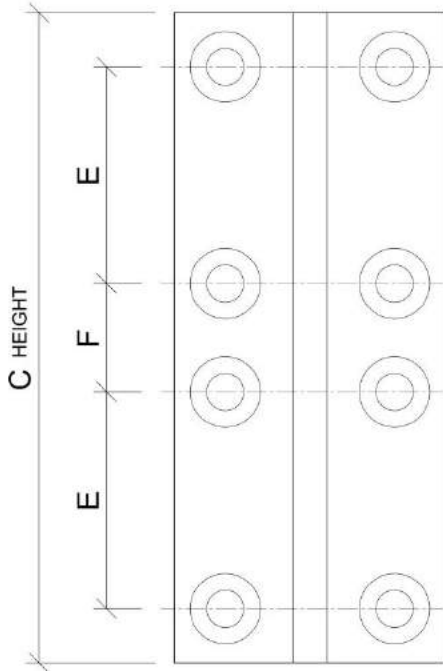


Seismic Fishplate

Seismic fishplate for standard & old Otis guide rails.

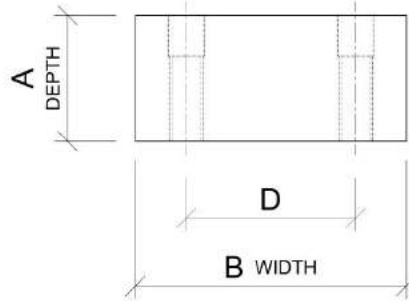


PLAN VIEW

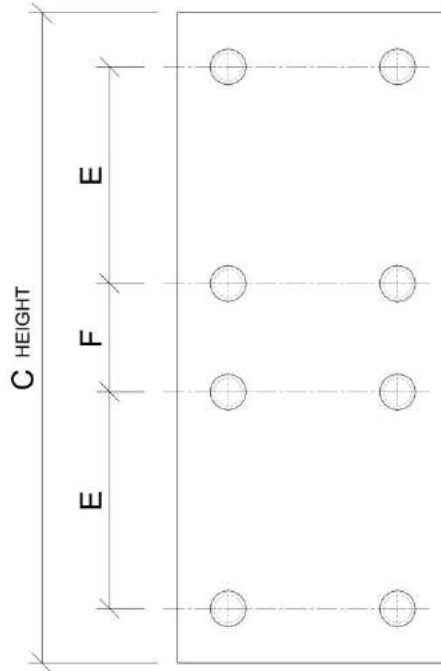


FRONT VIEW

TFP Series - Rail Section



PLAN VIEW



FRONT VIEW

MFP Series - Bar Section

- Seismic Risk Zone 2-4 fishplate for standard and obsolete Otis guide rails.
- Includes ASTM A307 Grade A bolts & nuts to comply with A17.1, section 2.23.2.1(b) & 8.4.8.6.1(f) & (h).
- Meets ASME A17.1-1996 thru 2013 including sections 2.23.7, 8.4.8.5 & 8.4.8.6.
- The section modulus and moment of inertia of the assembly is equal to or greater than the guide rail.
- Custom sizes available, including Van Emon
- Milled in USA.

*also see our unique
Low-Profile
Fishplates™
for absolute minimum
clearance conditions*

(415) 819-5744
rich@smartelevatortech.com
www.smartelevatortech.com

Model	Guide Rail	A	B	C	D	E	F	Bolts & Nuts	Weight
TFP89	8# (T89/B)	2.4	3.5	12	2.25	3	3	1/2-13 x 2.0	8.2 lbs.
MFP89	8# (T89/B)	1.69	3.5	12	2.25	3	3	1/2-13 x 2.0	20.1 lbs.
TFP89B	8# (Otis #2)	2.4	3.5	9	2.25	2.25	2.25	1/2-13 x 2.0	6.2 lbs.
MFP89B	8# (Otis #2)	1.69	3.5	9	2.25	2.25	2.25	1/2-13 x 2.0	15.1 lbs.
TFP127-2	15# (T127-2/B)	3.47	5	12	3.125	3	3	5/8-11 x 2.5	15.1 lbs.
MFP127-2	15# (T127-2/B)	2.25	5	12	3.125	3	3	5/8-11 x 2.5	38.3 lbs.
TFP127-2B	15# (Otis #1)	3.47	5	12	3.063	4	2	5/8-11 x 2.5	15.1 lbs.
MFP127-2B	15# (Otis #1)	2.25	5	12	3.063	4	2	5/8-11 x 2.5	38.3 lbs.

All dimensions are in inches.