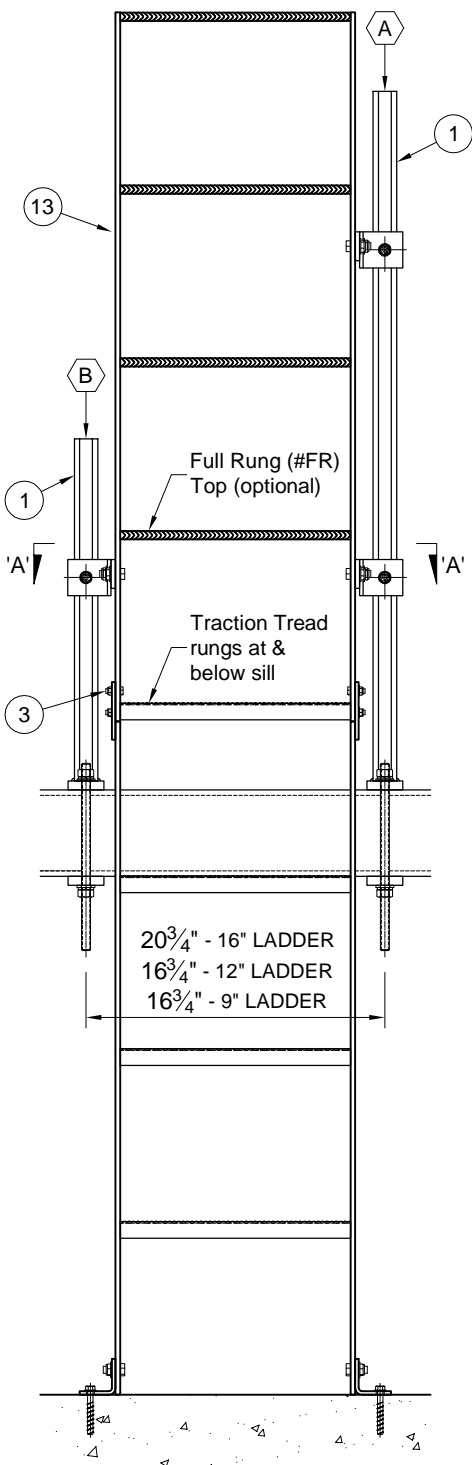


Section 'A-A'

#DBK Material List		
for (2) Ladders		
Item	Description	Qty.
A	Stanchion - Tall	1
B	Stanchion - Short	1
C	Bottom Clamp Plate	2
D	M16-2 x 333 Threaded Rod	4
E	M16-2 Nut	8
F	M16 Lock Washer	8
G	M16 Flat Washer	8

H	Unistrut #P1010M12 Spring Nut	8
I	M12-1.75 x 80 Threaded Stud	8
J	M12-1.75 Nut	8
K	M12 Lock Washer	8
L	Plate Washer 2"x2"x.25"	8
M	Plate Washer 2"x2"x.38"	4
N	Plate Washer 2"x2"x.50"	4
Unistrut Stanchions & Plates - PC Painted		
Fasteners - Zinc Plated		

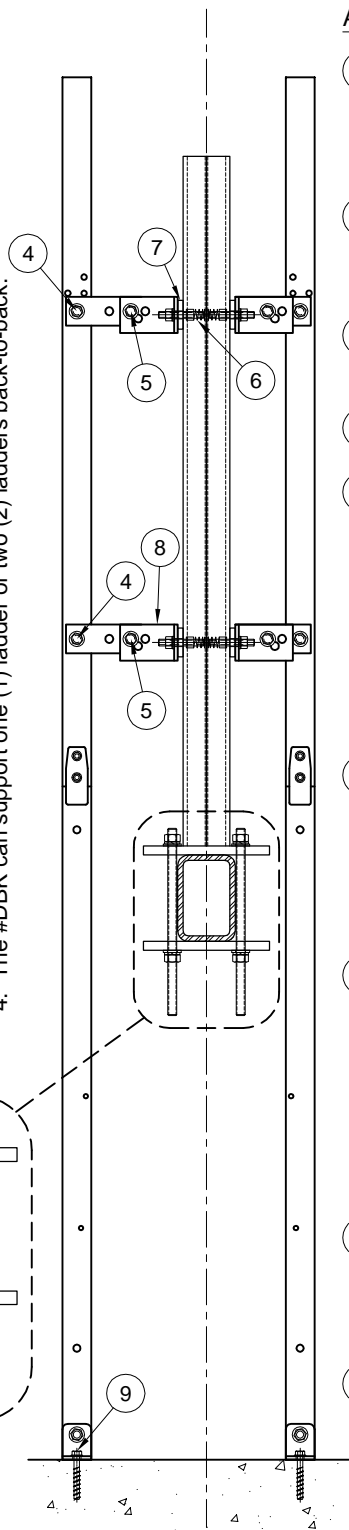
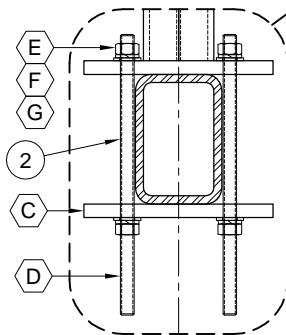


Front View

Adjusta Ladder™ Installation w/ Divider Beam Kit (#DBK)

#DBK Kit Notes:

1. The Divider Beam Kit (#DBK) can accommodate divider beams 3/4" to 6" wide and up to 10" high.
2. Divider beams may be HSS (tube steel) or I-beam (standard or wide flange) - HSS6x4 shown.
3. Divider beam top of steel (TOS) may be from 6" above to 12" below the elevator sill.
4. The #DBK can support one (1) ladder or two (2) ladders back-to-back.



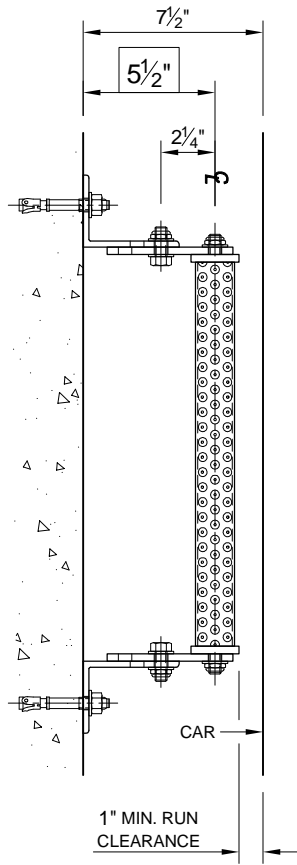
Side View

Adjusta Ladder™ #DBK Installation

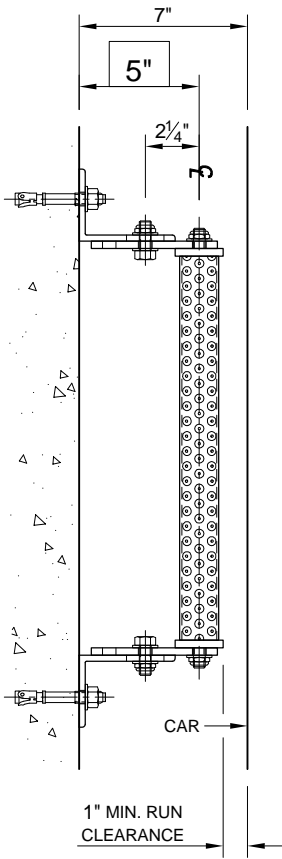
- 1 Mount Unistrut stanchions onto divider beam with the tall stanchion nearest the elevator entrance. Center stanchions on the divider beam.
- 2 Fasten M16 threaded rods & clamp plate tight to beam. Torque nuts to 185 ft/lbs [250 Nm] dry, 146 ft/lbs [198 Nm] lubricated.
- 3 Bolt ladder sections together using provided 5/16"-16 fasteners, align sections.
- 4 Mount extension bars to ladder risers with bolts provided.
- 5 Based on clearance to running car, leaving a minimum 0.80" [20mm], select the one of the two holes in the extension bars and one of the three holes in the wall brackets and fasten together with bolts provided. The combination of holes in the two components allow for center of ladder rung to mounting surface range of 4 1/2" to 7", in 1/2" increments.
- 6 Insert Unistrut spring nuts into Unistrut stanchion channels aligned with ladder bracket mounting holes. Add M12x80 threaded studs into nuts leaving sufficient exposed stud for spacers (below), bracket, lock washer & nut.
- 7 Add provided 2"x2" plate washer spacers, thickness based on divider beam width:
 - 3/4" - no spacers
 - 4" - (1) 3/8" spacer (shown)
 - 4 1/2" - (1) 3/8" & (1) 1/4" spacer
 - 5" - (1) 3/8" & (1) 1/2" spacer
 - 5 1/2" - (1) 3/8", (1) 1/2" & (1) 1/4"
 - 6" - (1) 3/8", (1) 1/2" & (2) 1/4"
- 8 Rotate upper wall brackets to align angle leg with Unistrut & spacers, insert brackets onto threaded studs. Add lock washers & nuts, torque to 50 ft/lbs [68 Nm] dry.
- 9 Rotate lower floor brackets to align angle leg with floor, anchor with 3/8" x 3" Tapcon LDT concrete screws, or equal (not incl.).

Smart Elevator Tech, LLC

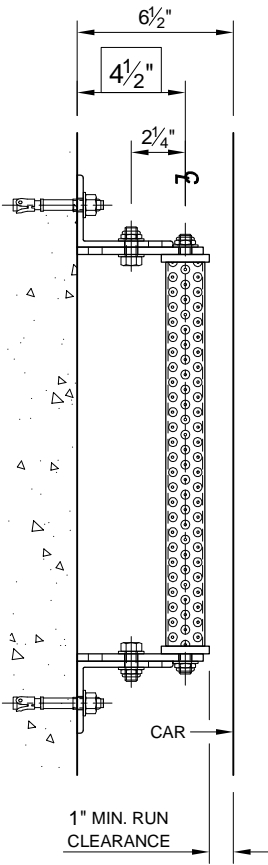
Adjusta Ladder™



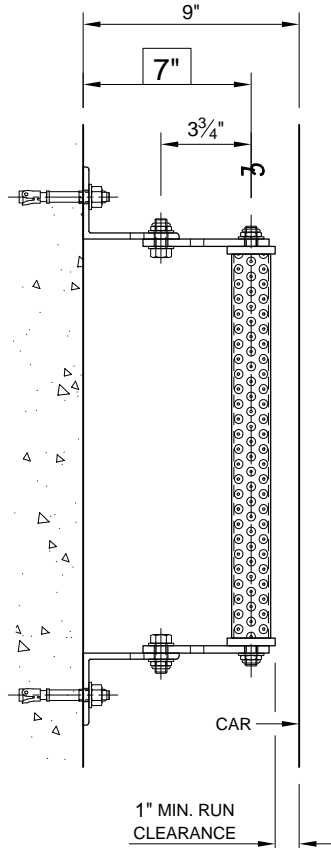
3
PIT LADDER PLAN
SCALE: 1-1/2"=1'-0"
POSITION: RUNG @ 5.5"



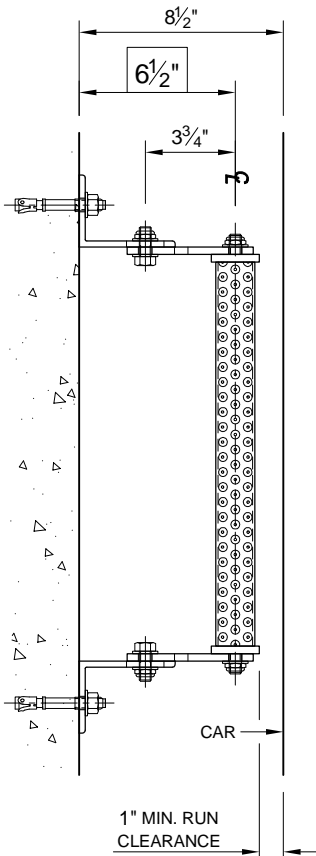
2
PIT LADDER PLAN
SCALE: 1-1/2"=1'-0"
POSITION: RUNG @ 5"



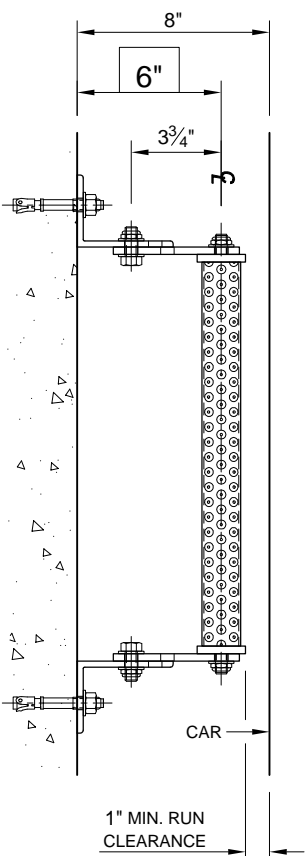
1
PIT LADDER PLAN
SCALE: 1-1/2"=1'-0"
POSITION: RUNG @ 4.5"



6
PIT LADDER PLAN
SCALE: 1-1/2"=1'-0"
POSITION: RUNG @ 7"



5
PIT LADDER PLAN
SCALE: 1-1/2"=1'-0"
POSITION: RUNG @ 6.5"



4
PIT LADDER PLAN
SCALE: 1-1/2"=1'-0"
POSITION: RUNG @ 6"