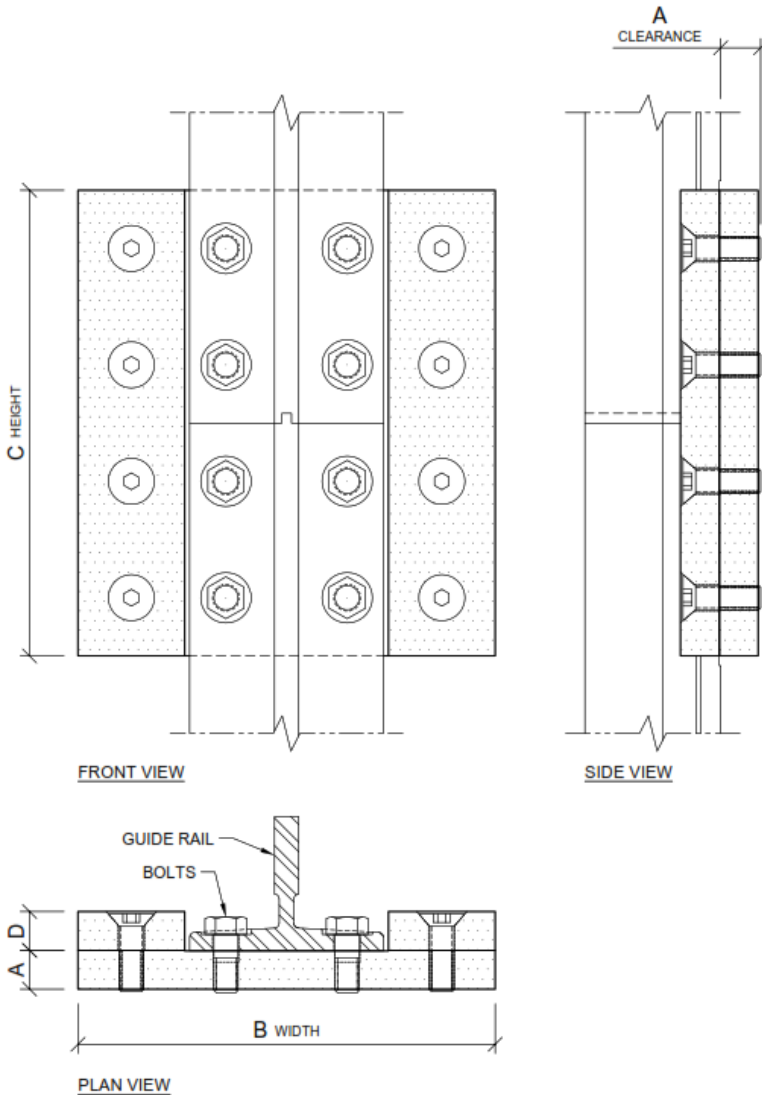


Low-Profile Fishplate™

Seismic fishplate when absolute minimum clearance required

(415) 819-5744
sales@smartelevatortech.com
www.smartelevatortech.com



- Seismic Risk Zone 2-4 fishplate for all guide rails, engineered to fit tight clearances where traditional seismic fishplates don't.
- 3/4" to 1-1/2" clearance back of guide rail to wall or beam.
- Meet seismic code with standard hoistway.
- Seismic retrofit with tight clearance without removing the rail via detachable side bars.
- Meets ASME A17.1/CSA B44 including sections 2.23.2, 2.23.7, 8.4.8.5 & 8.4.8.6.
- ASTM A307 Grade A bolts comply with A17.1, section 2.23.2.1(b) & 8.4.8.6.1(f).
- The section modulus and moment of inertia of the assembly is equal to or greater than the guide rail.
- California licensed structural engineer certified, calculations available.
- Quantities in stock, ready to ship.
- Made with pride in the USA.

Low-Profile Fishplates™

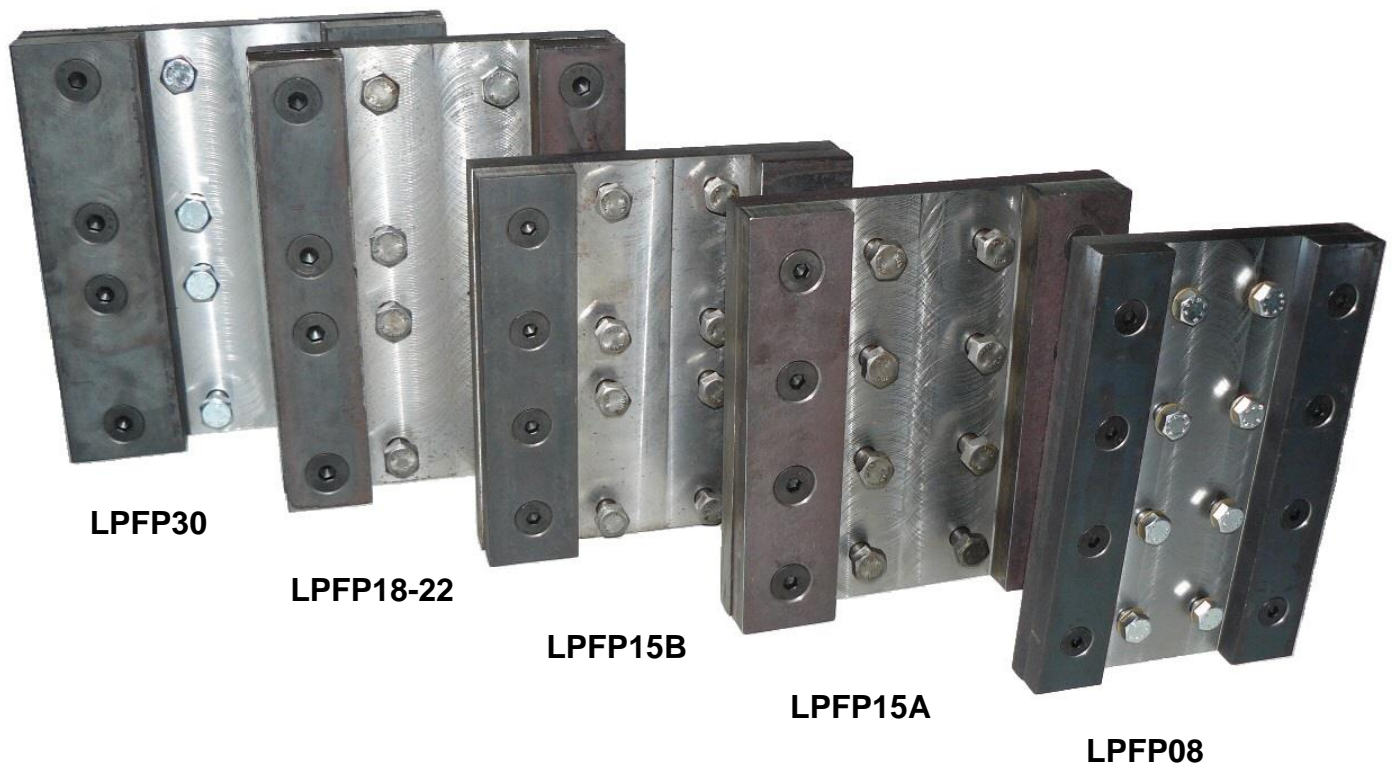
are installed in:

- The Statue of Liberty
- The World Trade Center
- Levi's (49's) Stadium
- D.C. federal buildings

Model	Guide Rail	A	B	C	D	Weight
LPFP08A	8# (T89/B)	0.75	8	12	0.75	32 lbs
LPFP08B	8# (Otis #2)	0.75	8	9	0.75	24 lbs
LPFP12A	12# (T127-1/B)	1	10.25	12	1	52 lbs
LPFP12B	12# (Otis #1-1/2)	1	10.25	12	1	52 lbs
LPFP15A	15# (T127-2/B)	1	10.75	12	1	57 lbs
LPFP15B	15# (Otis #1)	1	10.75	12	1	57 lbs
LPFP18-22	18.5# (T140-1/B)	1.25	11.25	14.5	1.375	92 lbs
	22.5# (T140-2/B)					
LPFP30A	30# (T140-3/B)	1.5	14	14.5	1.5	138 lbs
LPFP30B	30# (Otis #OA)	1.5	14	14.5	1.5	138 lbs



Low-Profile Fishplate™ #LPFP15A with guide rails shown in rotated views



LPFP30

LPFP18-22

LPFP15B

LPFP15A

LPFP08

Full model range of Low-Profile Fishplates™