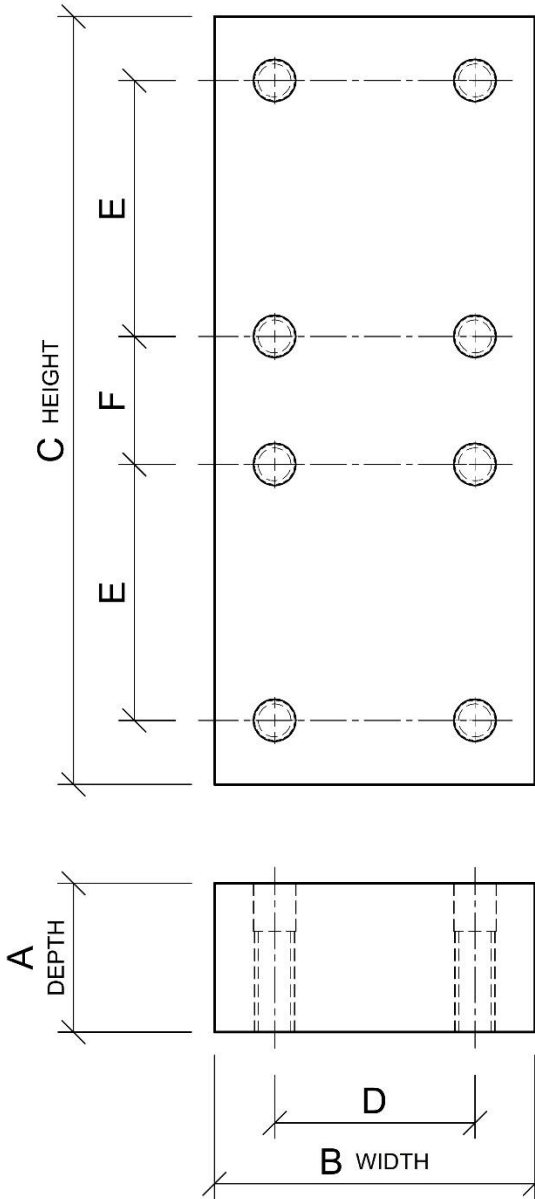


Seismic Fishplate

Bar-Type Seismic fishplate for old Otis Elevator guide rails



- Seismic Risk Zone 2-4 fishplate for obsolete Otis guide rails.
- Includes ASTM A307 Grade A bolts to comply with A17.1/B44, section 2.23.2.1(b) & 8.4.8.6.1(f).
- Meets ASME A17.1/CSA B44 including sections 2.23.7, 8.4.8.5 & 8.4.8.6.
- The section modulus and moment of inertia of the member is equal to or greater than the guide rail.
- Comparable to ISO “Minimum Clearance Seismic Fishplates.”
- Custom sizes available, including Van Emon.
- Milled in USA.

*also see our unique
Low-Profile
Fishplates™
for absolute minimum
clearance conditions*

(415) 819-5744
rich@smartelevatortech.com
www.smartelevatortech.com

Model	Guide Rail	Otis Rail Model	A	B	C	D	E	F	Weight
MFP89B	8#	#2	1.69	3.5	9	2.25	2.25	2.25	15.1 lbs
MFP127-1B	12#	#1-½	1.94	5	12	3.06	4	2	32.9 lbs
MFP127-2B	15#	#1	2.25	5	12	3.06	4	2	38.4 lbs
MFP140-2B	18# 22#	#3/4 #1/2	2.90	5.5	14.5	3.5	5	2.5	65.6 lbs
MFP140-3B	30#	#OA	3.74	5.5	14.5	3.5	5	2.5	84.5 lbs

• All dimensions are in inches.