

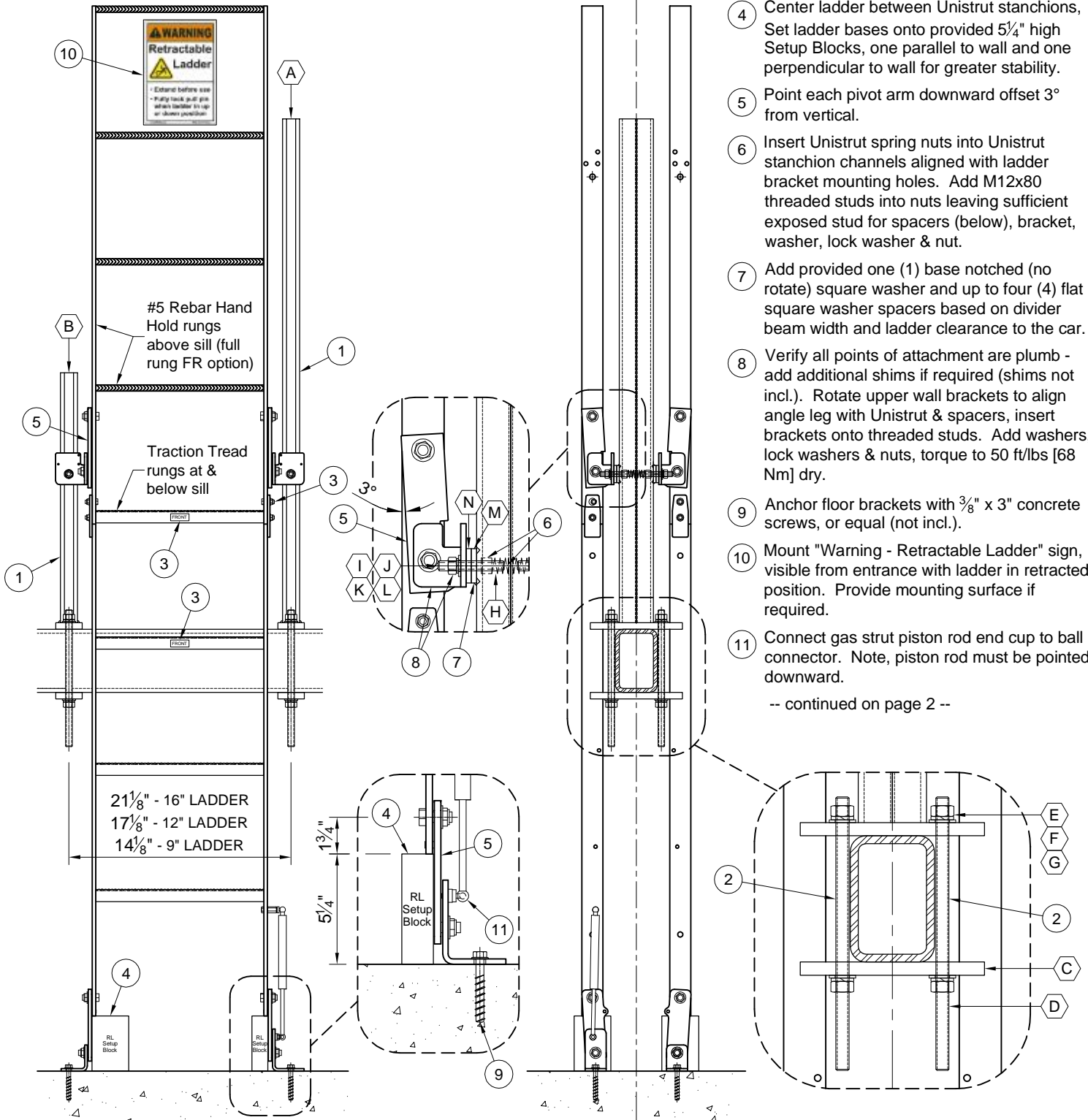
Retracta Ladder® Installation w/ Divider Beam Kit (#DBK)

1. The Divider Beam Kit (#DBK) can accommodate divider beams 4" to 6" wide and up to 10" high.
2. Divider beams may be HSS (tube steel) or I-beam (standard or wide flange) - HSS6x4 shown.
3. Divider beam top of steel (TOS) may be from 6" above to 12" below the elevator sill.
4. The #DBK can support one (1) ladder or two (2) ladders back-to-back.

Retracta Ladder® #DBK Installation Steps

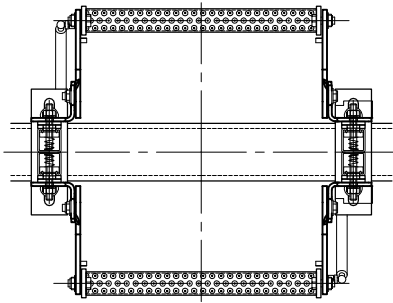
- 1 Mount Unistrut stanchions onto divider beam with the tall stanchion nearest the elevator entrance. Center stanchions on the divider beam.
- 2 Fasten M16 threaded rods & clamp plate tight to beam. Torque nuts to 185 ft/lbs [250 Nm] dry, 146 ft/lbs [198 Nm] lubricated.
- 3 If a multi-section ladder, bolt together using provided $\frac{5}{16}$ -16 fasteners. Align sections with "FRONT" stickers toward elevator.
- 4 Center ladder between Unistrut stanchions, Set ladder bases onto provided $\frac{5}{4}$ " high Setup Blocks, one parallel to wall and one perpendicular to wall for greater stability.
- 5 Point each pivot arm downward offset 3° from vertical.
- 6 Insert Unistrut spring nuts into Unistrut stanchion channels aligned with ladder bracket mounting holes. Add M12x80 threaded studs into nuts leaving sufficient exposed stud for spacers (below), bracket, washer, lock washer & nut.
- 7 Add provided one (1) base notched (no rotate) square washer and up to four (4) flat square washer spacers based on divider beam width and ladder clearance to the car.
- 8 Verify all points of attachment are plumb - add additional shims if required (shims not incl.). Rotate upper wall brackets to align angle leg with Unistrut & spacers, insert brackets onto threaded studs. Add washers, lock washers & nuts, torque to 50 ft/lbs [68 Nm] dry.
- 9 Anchor floor brackets with $\frac{3}{8}$ " x 3" concrete screws, or equal (not incl.).
- 10 Mount "Warning - Retractable Ladder" sign, visible from entrance with ladder in retracted position. Provide mounting surface if required.
- 11 Connect gas strut piston rod end cup to ball connector. Note, piston rod must be pointed downward.

-- continued on page 2 --



Front View

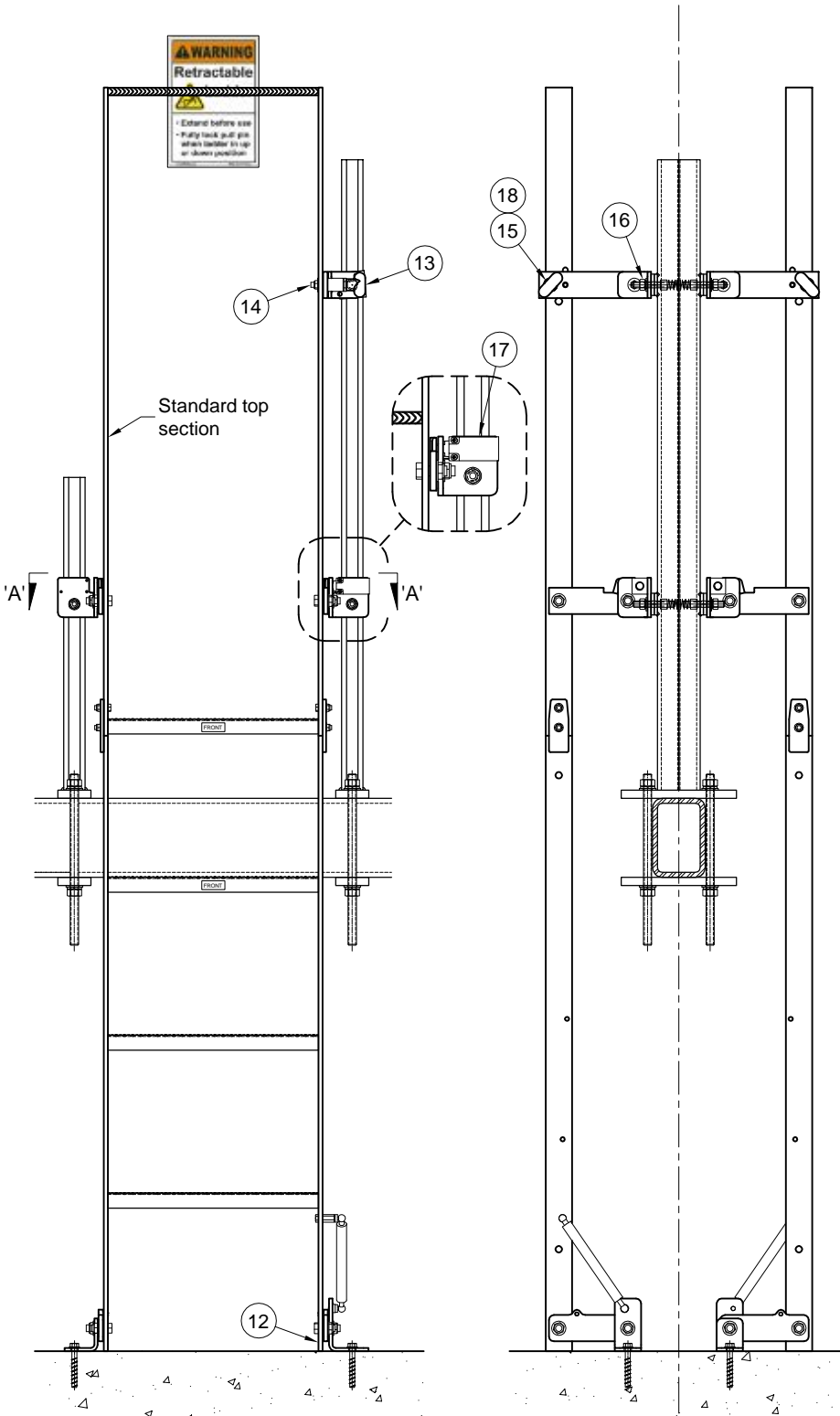
Side View



Section 'A-A'

#DBK Material List		
for (2) Ladders		
Item	Description	Qty.
A	Stanchion - Tall	1
B	Stanchion - Short	1
C	Bottom Clamp Plate	2
D	M16-2 x 333 Threaded Rod	4
E	M16-2 Nut	8
F	M16 Lock Washer	8

G	M16 Flat Washer	8
H	#P1010M12 Channel Spring Nut	6
I	M12-1.75 x 80 Threaded Stud	6
J	M12-1.75 Nut	6
K	M12 Lock Washer	6
L	M12 Flat Washer	6
M	#P2864 Sq. Washer - No Rotate	6
N	#P1064 Sq. Washer	24



Front View

Side View

-- continued from page 1 --

- 12 Remove Setup Blocks so that ladder riser bases rest onto the pit floor.
- 13 Verify hand (RH shown) of top Pull-Pin Bracket Assy. Must be on side closest to entrance. Reverse if required.
- 14 Attach Pull-Pin bracket assy. to ladder riser into bottom inside hole of 3-hole pattern with 3/8-16 thin nylon insert nut. Provide additional grease if dry. Do not tighten - leave sufficiently loose for proper pivot arm movement.
- 15 Fasten this connection to Unistrut with Pull-Pin locked in lower outside hole of 3-hole pattern. Move bracket up & mark, then down & mark and then fasten to Unistrut at middle between marks.
- 16 Anchor Pull-Pin bracket assy. to tall Unistrut stanchion, with a set of Unistrut nuts, threaded studs, square washer spacers, washers, lock washers & nuts (see steps 6 & 7).
- 17 Mount roller-plunger switch to middle height bracket on either side of ladder, as suited for wiring to pit stop switch or to elevator controller. Use provided 8-32 screws & washers. Pipe & wire N.C. switch contacts in series with pit switch or dedicated run to controller, if provided.
- 18 Test operation of ladder and switch. Verify opening of the elevator safety circuit (removal of power from motor & brake) with ladder in the extended position. Switch & safety circuit remain open until ladder is retracted upon exiting pit. Ensure ladder fully locks via Pull-Pin in both retracted and extended positions.