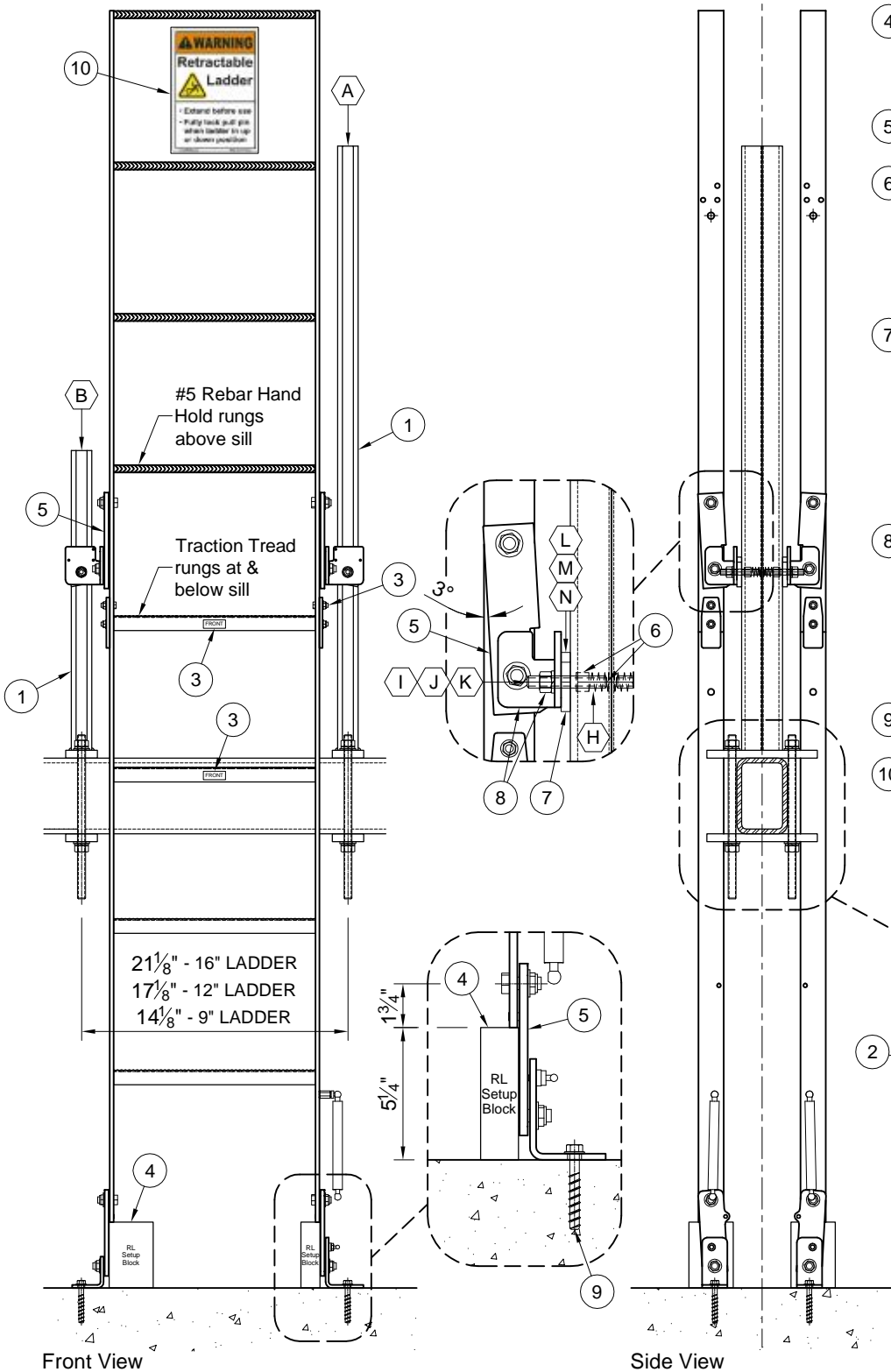


Retracta Ladder® Installation w/ Divider Beam Kit (#DBK)

#DBK Kit Notes:

1. The Divider Beam Kit (#DBK) can accommodate divider beams 3/4" to 6" wide and up to 10" high.
2. Divider beams may be HSS (tube steel) or I-beam (standard or wide flange) - HSS6x4 shown.
3. Divider beam top of steel (TOS) may be from 6" above to 12" below the elevator sill.
4. The #DBK can support one (1) ladder or two (2) ladders back-to-back.



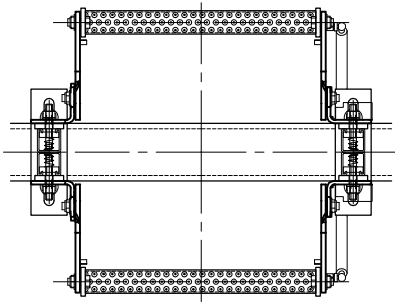
Retracta Ladder® #DBK Installation Steps

- 1 Mount Unistrut stanchions onto divider beam with the tall stanchion nearest the elevator entrance. Center stanchions on the divider beam.
- 2 Fasten M16 threaded rods & clamp plate tight to beam. Torque nuts to 185 ft/lbs [250 Nm] dry, 146 ft/lbs [198 Nm] lubricated.
- 3 If a multi-section ladder, bolt together using provided 5/16"-16 fasteners. Align sections with "FRONT" stickers toward elevator.
- 4 Center ladder between Unistrut stanchions, Set ladder bases onto provided 5 1/4" high Setup Blocks, one parallel to wall and one perpendicular to wall for greater stability.
- 5 Point each pivot arm downward offset 3° from vertical.
- 6 Insert Unistrut spring nuts into Unistrut stanchion channels aligned with ladder bracket mounting holes. Add M12x80 threaded studs into nuts leaving sufficient exposed stud for spacers (below), bracket, lock washer & nut.
- 7 Add provided 2"x2" plate washer spacers, thickness based on divider beam width:
 - 3/4" - no spacers
 - 4" - (1) 3/8" spacer (shown)
 - 4 1/2" - (1) 3/8" & (1) 1/4" spacer
 - 5" - (1) 3/8" & (1) 1/2" spacer
 - 5 1/2" - (1) 3/8", (1) 1/2" & (1) 1/4" spacer
 - 6" - (1) 3/8", (1) 1/2" & (2) 1/4" spacer
- 8 Verify all points of attachment are plumb - add additional shims if required (shims not incl.). Rotate upper wall brackets to align angle leg with Unistrut & spacers, insert brackets onto threaded studs. Add lock washers & nuts, torque to 50 ft/lbs [68 Nm] dry.
- 9 Anchor floor brackets with 3/8" x 3" Tapcon LDT concrete screws, or equal (not incl.).
- 10 Mount "Warning - Retractable Ladder" sign to wall, visible from entrance with ladder in retracted position. Provide mounting surface if required.

-- continued on page 2 --

Front View

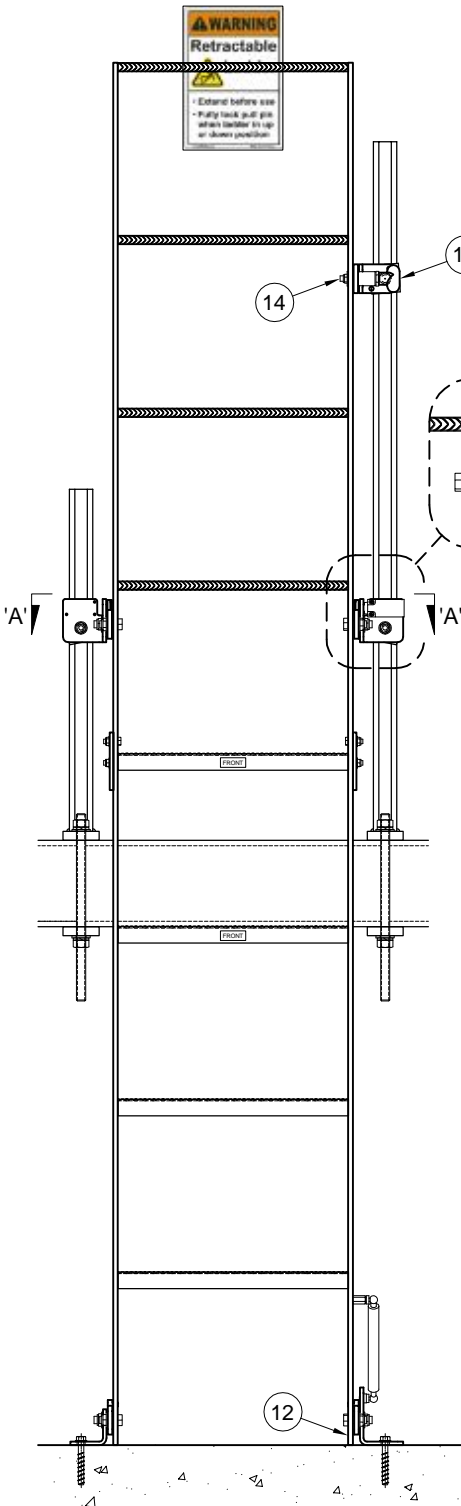
Side View



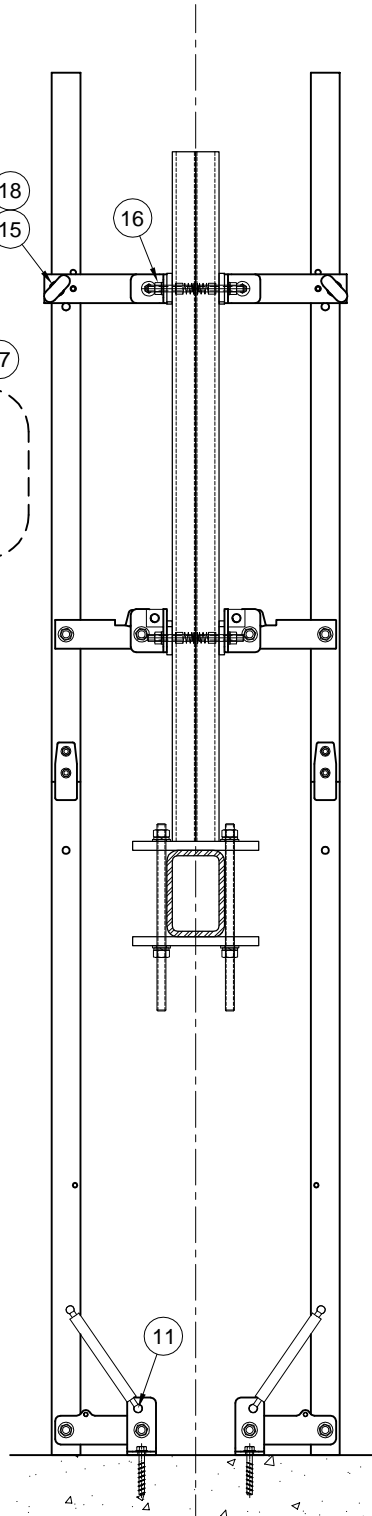
Section 'A-A'

#DBK Material List for (2) Ladders		
Item	Description	Qty.
A	Stanchion - Tall	1
B	Stanchion - Short	1
C	Bottom Clamp Plate	2
D	M16-2 x 333 Threaded Rod	4
E	M16-2 Nut	8
F	M16 Lock Washer	8
G	M16 Flat Washer	8

H	Unistrut #P1010M12 Spring Nut	8
I	M12-1.75 x 80 Threaded Stud	8
J	M12-1.75 Nut	8
K	M12 Lock Washer	8
L	Plate Washer 2"x2"x.25"	8
M	Plate Washer 2"x2"x.38"	4
N	Plate Washer 2"x2"x.50"	4
Unistrut Stanchions & Plates - PC Painted		
Fasteners - Zinc Plated		



Front View



Side View

-- continued from page 1 --

- 11 Connect gas strut piston cup to ball connector, replace wire clip. Note, piston must be pointed downward.
- 12 Remove Setup Blocks so that ladder riser bases rest onto the pit floor.
- 13 Verify hand (RH shown) of top Pull-Pin Bracket Assy. Must be on side closest to entrance. Reverse if required.
- 14 Attach Pull-Pin bracket assy. to ladder riser into bottom inside hole of 3-hole pattern with $\frac{3}{8}$ -16 thin nylon insert nut. Provide additional grease if dry. Do not tighten - leave sufficiently loose for proper pivot arm movement.
- 15 Fasten this connection to Unistrut with Pull-Pin locked in lower outside hole of 3-hole pattern. Move bracket up & mark, then down & mark and then fasten to Unistrut at middle between marks.
- 16 Anchor Pull-Pin bracket assy. to tall Unistrut stanchion, with a set of Unistrut nuts, threaded studs, plate washer spacers, washers, lock washers & nuts (see steps 6 & 7).
- 17 Mount roller-plunger switch to middle height bracket on either side of ladder, as suited for wiring to pit stop switch or to elevator controller. Use provided 8-32 screws & washers. Pipe & wire N.C. switch contacts in series with pit switch or dedicated run to controller, if provided.
- 18 Test operation of ladder and switch. Verify opening of the elevator safety circuit (removal of power from motor & brake) with ladder in the extended position. Switch & safety circuit remain open until ladder is retracted upon exiting pit. Ensure ladder fully locks via Pull-Pin in both retracted and extended positions.