



Overview: Which Pit Ladder is Right for Your Installation?

Nonretractable Ladders:

1. **The SmartLadder™**: complies with NEW requirements in the 2022 A17.1/B44 Elevator Code. Removes power from elevator motor and brake when up to 9.5 kg (21 lb) is applied to any rung of the ladder, per criteria set by code inquiry interpretation. Need minimum 6-3/8" between car/platform and the hoistway wall. Works with NEW **Divider Beam Kit™**.

Two options for the *Ladder Electrical Device*:

- a. **Momentary Switch** – switch removes power only when person is on the ladder, no protection while working in pit.
 - b. **Manual Reset Switch** – switch removes power until manually reset, protects while on the ladder and working in pit (not available for seismic installations).
2. **The SmartGate Ladder™**: complies with NEW requirements in the 2022 A17.1/B44 Elevator Code. Removes power from elevator motor and brake when gate (guard) is opened. Gate makes all step rungs on ladder inaccessible when closed. Need minimum 6-9/16" between car/platform and the hoistway wall. Works with NEW **Divider Beam Kit™**.
 3. **The Adjusta Ladder™**: our version of the standard pit ladder. Stationary but adjustable at installation to increase safety by enabling the maximum distance between the rung and the wall from code minimum 4-1/2" to OSHA prescribed 7". Need minimum 6-3/8" between car/platform and the hoistway wall. Complies with ASME A17.1/CSA B44 1996 – 2019 code. Works with NEW **Divider Beam Kit™**.

Retractable Ladders:

➤ all meet / exceed new 2022 A17.1/B44 code requirements:

1. **Retracta Ladder®**: extends 7" from wall – retract to 2-3/4". Need only 3-5/8" between the car and the wall/beam. Works with NEW **Divider Beam Kit™**.

If you have center-opening doors, enable safer reach to a *Retracta Ladder®* with the optional **Pull Pin Pole™**.

2. **Extended Retracta Ladder®** and **Extra Extended Retracta Ladder®** extend 18" or 24" from wall, retract to 3-3/4". Need 4-5/8" clearance. For center-opening cars or when the door unlocking device is too far from the ladder or you can't put the ladder on the strike side. Safer reach to a ladder as much as 34" away with the **Pull Pin Pole™**.
3. **The Powered Retracta Ladder®**: a powered ladder that extends a full 36" from the wall. Retract to 6-1/2", so need at least 7-1/2" of clearance. Since it's powered, safe reach to a ladder over 34" away is not an issue. Used with larger elevators with wide platform center-opening doors or when you can't put the ladder on the strike side.

Retractable



Retracta Ladder®
Extends 7" from wall; retracts to less than 3"

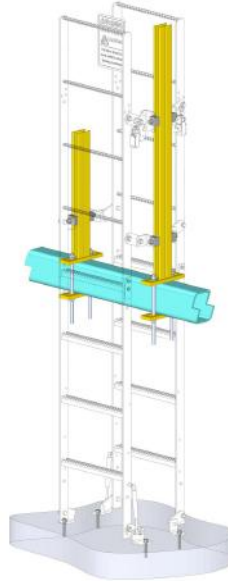


Extended Retracta Ladder®
Extends 18" or 24" from wall; retracts to less than 4"



Powered Retracta Ladder®
Extends 36" from wall

Non-Retractable



Divider Beam Kit™
Saves time and money when ladders installed at divider beam



SmartLadder™
Weight-activated switched ladder



SmartGate Ladder™
Switched gated ladder

Other Useful Products

Rope Align Block™

Aligns ropes for sheave or rope brake alignment



Low-Profile Fishplate™

Seismic fishplates only 3/4" to 1 1/2" deep for 8 to 30 lb rails

